

# ION3<sup>™</sup>

---

## AIR RINSING SYSTEM

**The ION3<sup>™</sup> Air Rinsing System is a waterless solution for rinsing containers on brewery, beverage, nutritional/pharmaceutical, food processing, and other manufacturing lines.**

Clean, ionized air provides effective and cost-efficient rinsing of container interiors and exteriors to industry specifications at multiple sizes, configurations, and line speeds. The system includes integrated vacuum debris collection. The ION3<sup>™</sup> is a self-contained, HEPA-filtered solution capable of processing containers with openings as small as 28mm at speeds as fast as 1,500 cpm.



*\*Material handling pictured not included*

**ION3<sup>TM</sup> Features**

**SYSTEM HIGHLIGHTS**

- High speed, energy efficient DirectDrive<sup>TM</sup> blower housed in integrated wash-down chamber
  - Blower is optimized for higher kW efficiency & reduced footprint
  - Blower is belt- and tensioner-free
  - Compressed air backup air inlet port
- Customized to line speed and container sizes & geometries
- Clean, ionized air stream directed by application-specific air components
- Internal & external container rinsing capabilities
- Integrated vacuum system to collect & remove debris (Ø4" inlet port)
- Container rails customized to specifications
- Safe design:
  - Pressure relief safety valve
  - Rated Pressure Vessel
  - Interlocked ion bar access

**MAINTENANCE**

- Interior designed for water collection & removal
- Completely washdown ready
  - Washdown Stainless Steel 304
    - SS316 & CPVC solutions available
  - Washdown IP66 ion bar
- Lift-off front & rear panels for easy maintenance
- HEPA & debris element service indicators
- Stainless steel threaded levelers for 5" vertical adjustment
- Designed for easy installation on existing lines
- Minimal spare parts

**CONTROLS**

- Allen-Bradley Variable Frequency Drive standard (all VFD brands available)
- LOTO line power fused disconnect
- Operator-friendly interface
- Ionizer & blower indicators
- UL508, cUL, CE standards
  - CAT 3-4/PLd-e available
- Electrical Panel NEMA4/IP66

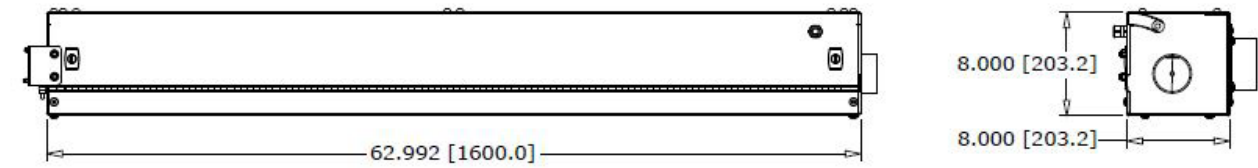


**FILTRATION**

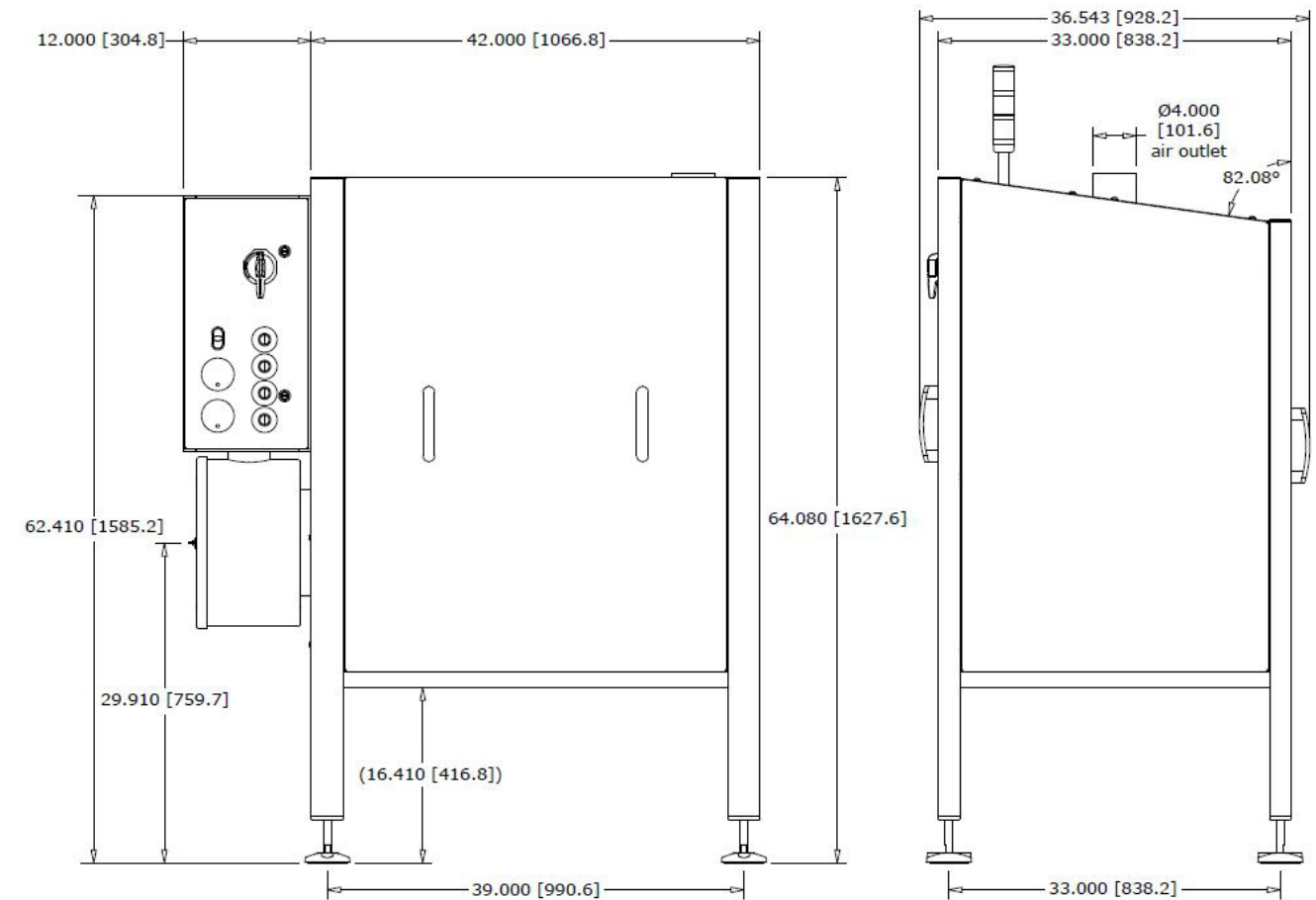
- Triple pass filtration design
- Rated pressure vessel
- Blower inlet pre-filter
- Blower inlet filter, 5 micron
- HEPA outlet filter, 99.97% efficient @ 0.3 micron
- Ø4" outlet port

**ION3<sup>TM</sup> Dimensions**

**ION Bar**



**ION Enclosure**



**Optional Features**

- Network integration
  - Ethernet, Profibus, DeviceNet
- Vacuum system
- Container hold-down
- Container opening presentation
- Emergency glass shard protection
- Integrated line control packages
- Product detection sensor
- Stack light
- Line power protection
- HEPA blower outlet filter assembly

